



Sunday Worship

First Parish

A liberal religious community, welcoming to all

First gathered 1739

September 15, 2024

Worship in the Meetinghouse Sanctuary and Online

The sun rose at 6:25am and will set at 6:55pm *in sh'allah*
bringing us 12 hours, 30 minutes of sunlight,
20 minutes less than last Sunday.

The moon is waxing toward a full moon on Tuesday.

Sounding of the Chime

*In the sanctuary silence during the prelude is appreciated.
Please also silence your cell phones and electronic devices.*

Prelude

Going to Church
Wilhelm Peterson-Berger
Kenneth Seitz, Piano

Welcome and Announcements

Rev. Erica Federspiel Richmond, Parish Minister

Greeting Your Neighbor

Call to Worship and Chalice Lighting

Ruben Hopwood, Worship Associate

Congregational Affirmation

First Parish Mission Statement, adopted 2010

We choose to be
a liberal religious community, welcoming to all.
We encourage each other on our spiritual journeys,
support one another through the changes in our lives,
and challenge the excesses and injustices of our time.
Called to love and upheld by joy, we live our faith.

Adopted by the members of First Parish Arlington MA
March 28, 2010

Hymn 357

Bright Morning Stars

Time for All Ages

Rev. Stevie Carmody, Minister of Religious Education

As children leave for religious education we sing:

Go now in peace, go now in peace.
May the spirit of love surround you
everywhere, everywhere you may go.

Vayan en paz, vayan en paz
Pueda el amor rodear los siempre
por doquier, por doquier que vayan.

Go Now in Peace -- Vayan en paz

Trans. Rev. Lilia Cuervo

Natalie Sleeth

Go now in peace, Gonow in peace. May the spi - rit of
Va - yan en paz, va-yan en paz, Pue - da el a - mor ro-de -

love sur - round you ev-'ry where, ev-'ry-where, you may go.
ar- los si-em - pre por do-quier, por do-quier, que va - yan.

Celebrations and Concerns

Rainer Dressler, Lay Minister

If moved to do so, you may place a stone
for a joy or sorrow you are holding in your heart.
If you write a joy or sorrow on the card available
at the back of the sanctuary,
the ordained and lay ministers will hold it
in their thoughts and prayers.
If you wish to speak of your joy or sorrow,
please line up after placing your stone.
When you are motioned forward,
speak into the microphone and tell us your name.
Speak briefly and from your own experience.

Interlude for the Placing of Stones

Candle Music
Kenneth Seitz, piano

Prayer and Silent Meditation

Rev. Marta Morris Flanagan, Lead Minister

Musical Response

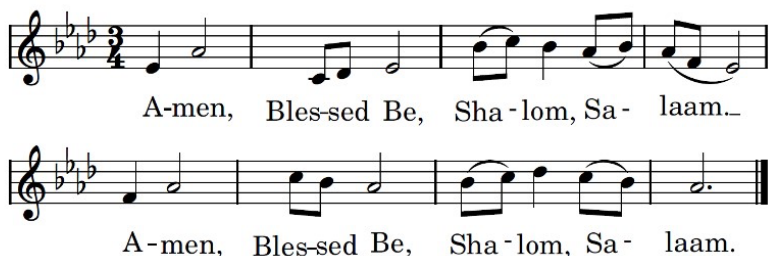
Amen, Blessed Be
Kenneth Seitz, piano

Words: *Amen, Blessed Be. Shalom, Salaam.*

Sung twice by the congregation

Amen, Blessed Be, Shalom, Salaam

Kenneth H. Seitz



Offering

Dirait-on
Morten Lauridsen
First Parish Choir

*This Sunday half of the offering supports
Gould Farm,*

www.gouldfarm.org.

*Founded in 1913, Gould Farm in the Berkshires is
the first residential therapeutic community
in the US dedicated to helping
adults with mental health challenges move toward
recovery and independence.*

*The remaining half of your offering supports the life
and work of this Parish.*

*To donate using your smartphone, you may text
“fpuu offering” to 73256.*

Then follow the directions in the texts you receive.

*If you would like your entire offering
to support your pledge,
indicate “pledge” on your check or envelope.*

Hymn 391

Voice Still and Small

Sermon

Rev. Erica Federspiel Richmond

Hymn 6

Just as Long as I Have Breath

Benediction

***May faith in the Spirit of Life,
Hope for the community of Earth,
and Love of the sacred in one another
Be ours now and in all the days to come.***

*Saying these words responsively is a custom at
First Parish. You are invited to take the hand of
one beside you or place your hand on their shoulder.*

Postlude

A Somewhat Wistful Waltz
Kenneth Seitz
Kenneth Seitz, Piano

*Our postlude is the concluding passage of our
common worship.*

All are asked to remain seated during the postlude.

*After worship those in the sanctuary are invited to move
into the vestry for light refreshments and conversation.*

*If it is 11:30 parents are asked to quietly leave to pick up
their children from the religious education program.*

All are invited back into the Sanctuary at 12 noon for

Hotline for Israel / Palestine,

a special First Parish Alliance Program:

*In October 2023, Shira Hoffer, founded
the Hotline for Israel/Palestine.*

*A senior at Harvard, Shira's work has been featured on
public radio and in the news.*

*Rev. Marta Flanagan will converse with Shira
and then open up the conversation to others.*

All are welcome.



Copyright Deepa Iyer
SM, © 2017 Deepa Iyer
All rights reserved. All prior licenses revoked.

What role or roles might you take on this fall?

Go to *buildingmovement.org* to learn more.

You Sing My Hymn, I Sing Yours

Welcome to worship at First Parish- whatever your story, wherever you are on your journey.

In worship we seek both affirmation and challenge, for these are necessary ingredients for spiritual growth and deepening.

We come with different theological and religious orientations, but we do not seek sameness or some common denominator. We engage in worship with open hearts and minds. Our sung and spoken words reflect a range of religious perspectives.

In worship, some elements will touch us deeply, and some will not. Whatever our personal preferences about the elements in any worship service, we say, *You sing my hymn, I sing yours*. In worship we give and receive.

The First Parish Worship Associates
November 2015

First Parish Unitarian Universalist of Arlington

www.firstparish.info

First Parish is a liberal religious community working toward another way to be and act in our time. As a Unitarian Universalist congregation (www.uua.org), we are not bound to any statement of belief or creed but to an aspiration to act in love. We believe personal experience, conscience and reason are final authorities in religion.

A religious education program for children meets during Sunday worship. Children are given the tools with which to answer their religious questions of the world.

To learn more, visit the information table after worship. You can sign up for the weekly E-Bulletin there or by emailing churchoffice@firstparish.info

First Parish is self-governing and supported by members and friends who contribute their time, talent and treasure. The elected Parish Committee (“ParCom”) is the governing board. ParCom can be reached at Parishexec@firstparish.info.

Anne Quaadgras, Chair	John Anderson, Vice-Chair	
Joanna Pushee, Clerk	Carolyn Hodges, Treasurer	
Jeff Keffer	Steve McMullin	Susan Moore
Allan Tosti	Kate Tranquada	

Staff serve the members, leaders and mission of First Parish.

Rev. Marta Morris Flanagan, *Lead Minister*
Rev. Erica Federspiel Richmond, *Parish Minister*
Rev. Stevie Carmody, *Minister of Religious Education*
Daniel Parsley, *Music Director*
Kenneth Seitz, *Director of Music, Emeritus*
Rose Sawyer Marsh, *Youth Program Coordinator*
Bella Jaffe, *Religious Education Assistant*
Ebierre Omoregie, *Office Manager*
Allison Sillers, *Office & Communications Associate*
Jaqueline De Jesus, *Sexton*
Rev. Wendy Page, *Affiliate Minister*

A Unitarian Universalist Welcoming Congregation, First Parish warmly and intentionally welcomes gay, lesbian, bisexual, queer and transgender people.