

After each speaks, she or he

will say a ritual phrase:

It is not I who speaks but the wind.

Wind blows through me.

Long after me, is the wind

From *Councils* by Marge Piercy

Meetinghouse Campaign Update



October 20, 2013

I. Introductions

II. Accomplishments So Far

III. Review of Project Goals and Current Feasibility Study Possibilities

IV. Questions

I. Introductions

1. The Building Design Group

- Carolyn Hodges and Jeff Keffer, Meetinghouse Campaign chairs
- Ellen Leigh (accessibility)
- Trish Webb (secretary)
- John Chamberlain (Property/ Green Sanctuary)
- Katherine MacPhail (architectural)
- Anne Goodwin (ParComm)
- Andrew Leonard (architectural/construction)
- Sharen Leonard (member-at-large)
- Alane Hodges (RE)
- John Galantowicz (financial)
- Sarah Short (RE)
- Barbara Tosti (Safe Congregations/Property/Memorial Garden)
- Chris Jones (accessibility)
- Advisory members are Marta Flanagan, Tina Schulz, Peter Nobile and Dean Hoeflich from LDa Architects, and Gerri Pedrini from Sunshine Nursery School.

II. Accomplishments So Far

1. The Committee has been busy, meeting weekly since about mid-June. The highlights of what we've been up to include:

Procurement of an architect: we have hired LDa, who helped us complete our Master Plan study last year, to continue with the feasibility study and design portions of our project.

Development of building priorities: our task is to make sure these priorities are consistent with the congregational goals and needs, and that they fit within the available budget. The priorities are based upon the earlier vote of the congregation and include **accessibility, improved meeting space and maintaining our alignment with “green” principles.**

Determine an effective management model for the project: the group has decided on an Owners Project Manager (OPM) model.

III. Feasibility Study - Review of Priorities and Current Floor Plan Diagrams

1. Accessibility, including all program space and toilet rooms

- Entire First Parish campus will be brought up to current Massachusetts Access Accessibility Board (MAAB) standards; all new toilet rooms will be gender-free.

2. Improved/new Program Space, including climate control and mold remediation

- More flexible, some larger, and mostly accessible and climate controlled meeting, RE, Sunshine spaces

3. Ecological, green and sustainable design objectives

- Renovation of existing space (rather than new construction) is an example of [Green Sanctuary stewardship in action](#)

ACCESSIBLE, CLIMATE CONTROLLED PROGRAM SPACE SUMMARY

Basement - Existing

0 SF of accesible program space

0 SF of climate controlled space

0 SF of accessible toilets

First Floor - Existing

3,574 SF of accesible program space

0 SF of climate controlled space

282 SF of accessible toilets

Second Floor - Existing

0 SF of accesible program space

0 SF of climate controlled space

0 SF of accessible toilets

Basement - Possible Improvements

1,406 SF of accesible program space

2,550 SF of climate controlled space

96 SF of accessible toilets

First Floor - Possible Improvements

4,312 SF of accesible program space

9,010 SF of climate controlled space

586 SF of accessible toilets

Second Floor - Possible Improvements

1,396 SF of accesible program space

2,550 SF of climate controlled space

96 SF of accessible toilets

TOTALS - Existing

3,574 SF of accesible program space

0 SF of climate controlled space

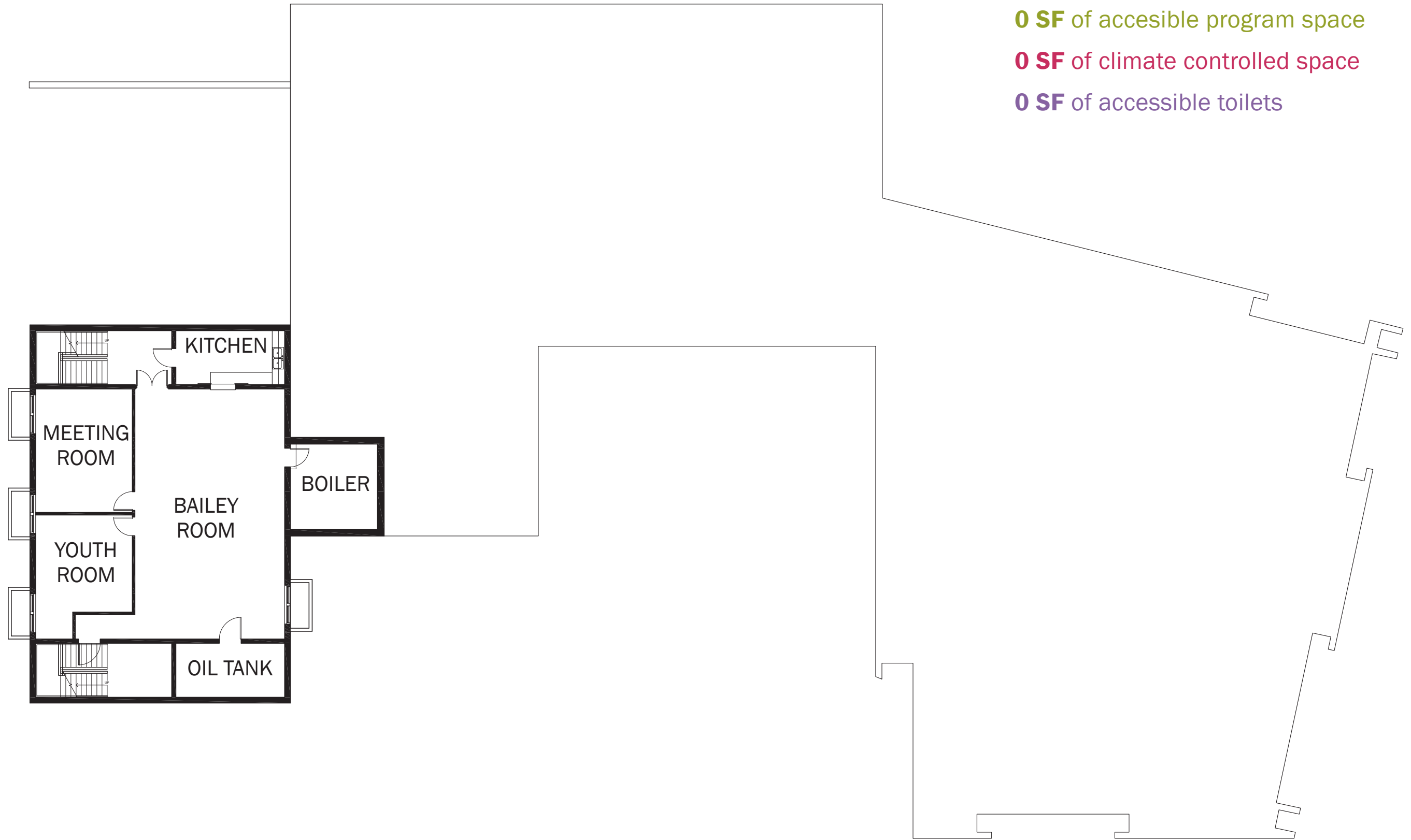
282 SF of accessible toilets

TOTALS - Possible

7,114 SF of accesible program space

14,110 SF of climate controlled space

778 SF of accessible toilets



Existing Basement

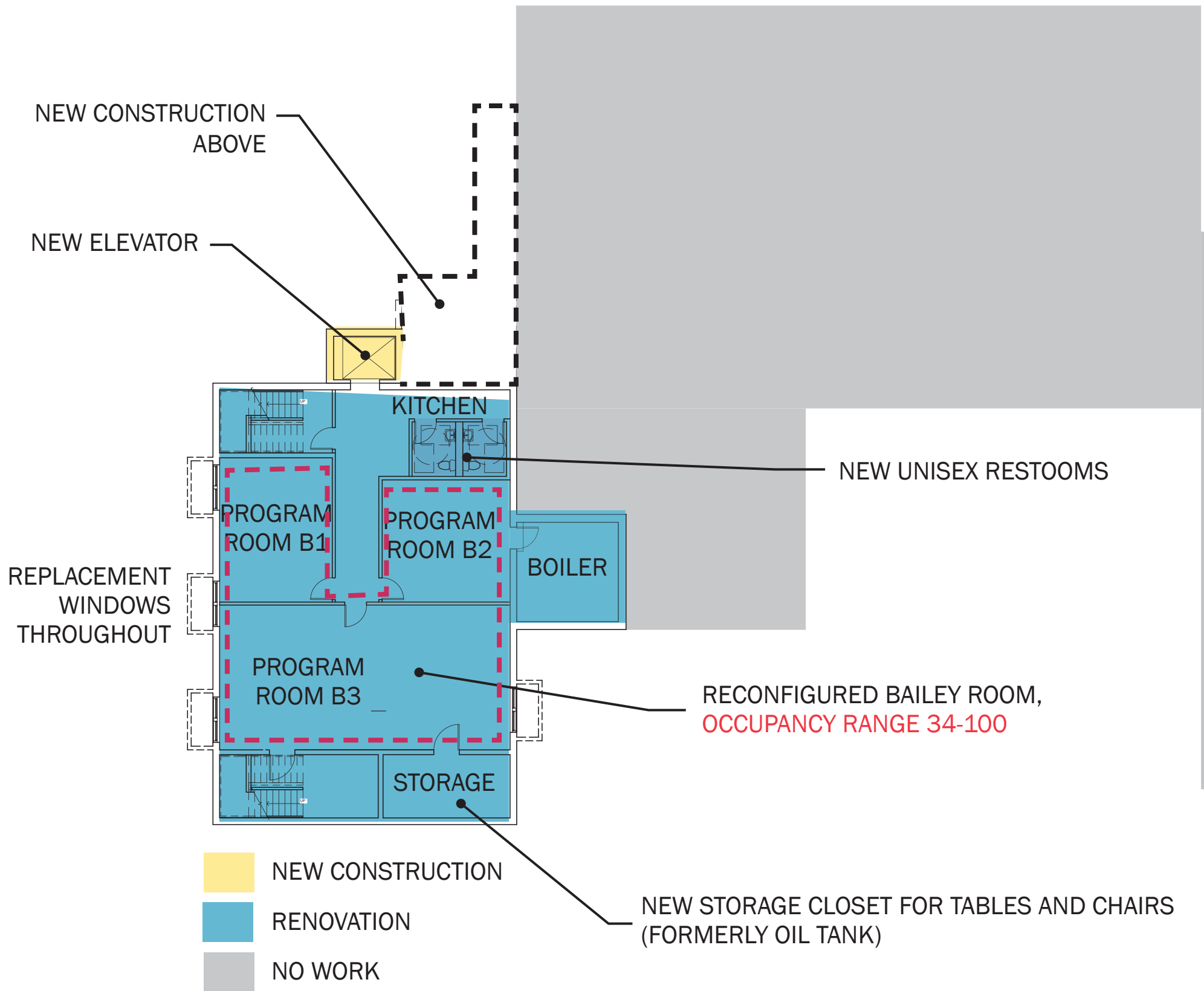
Meetinghouse Campaign Update

Basement - Possible Improvements

1,406 SF of accesible program space

2,550 SF of climate controlled space

96 SF of accessible toilets



Possible Basement Improvements



First Floor - Existing

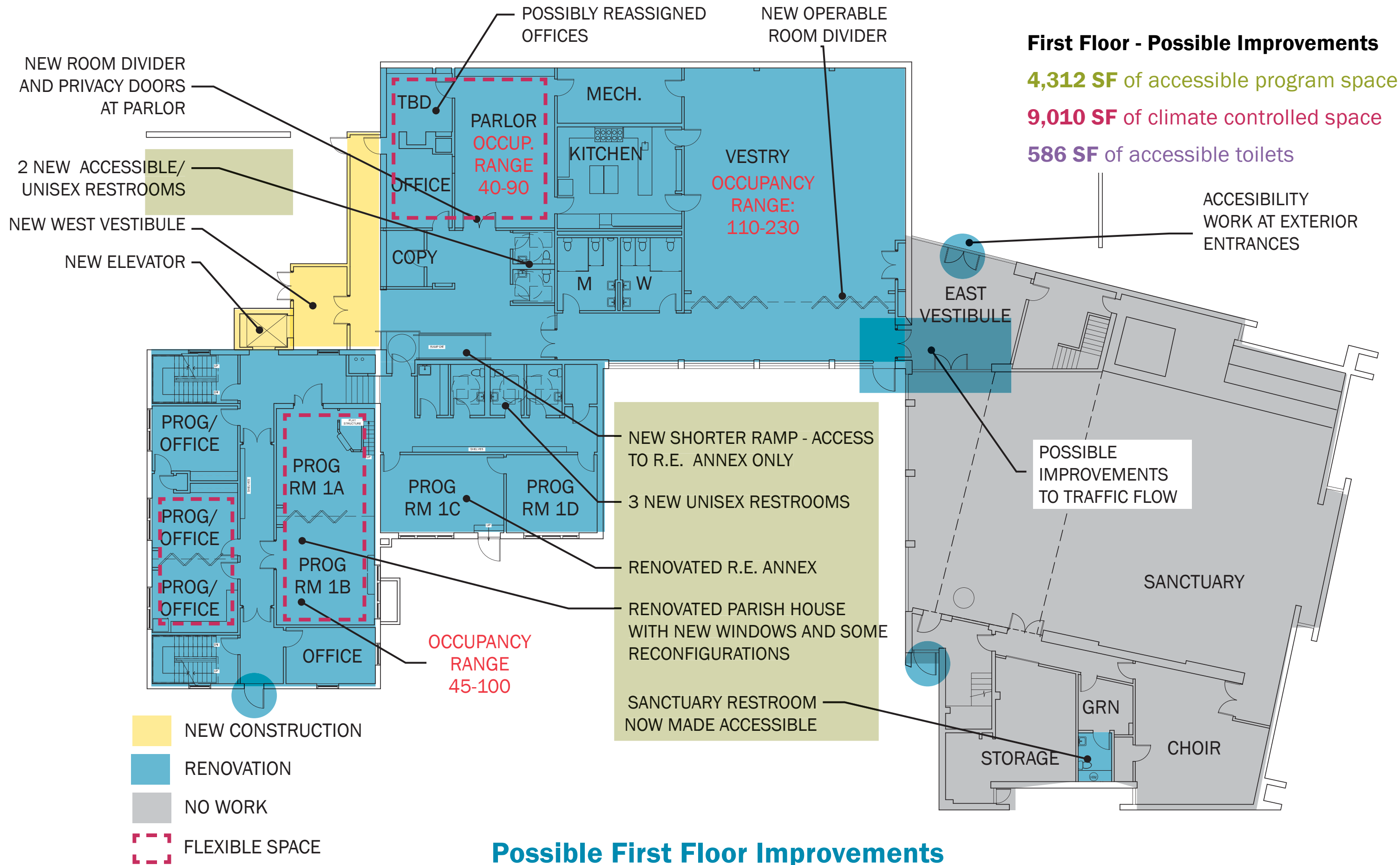
3,574 SF of accesible program space

0 SF of climate controlled space

282 SF of accessible toilets

Existing First Floor

Meetinghouse Campaign Update



Possible First Floor Improvements



Existing Second Floor

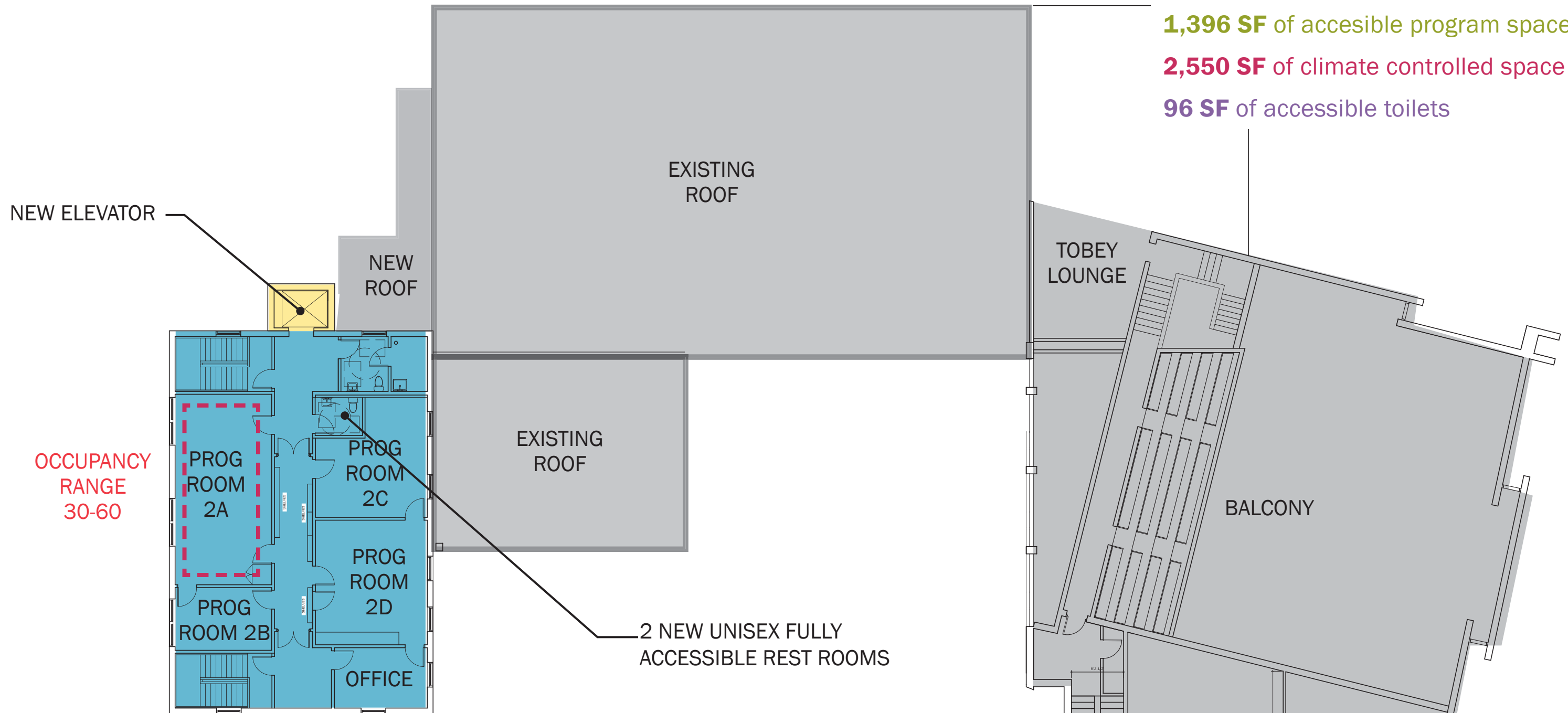
Meetinghouse Campaign Update

Second Floor - Possible Improvements

1,396 SF of accessible program space

2,550 SF of climate controlled space

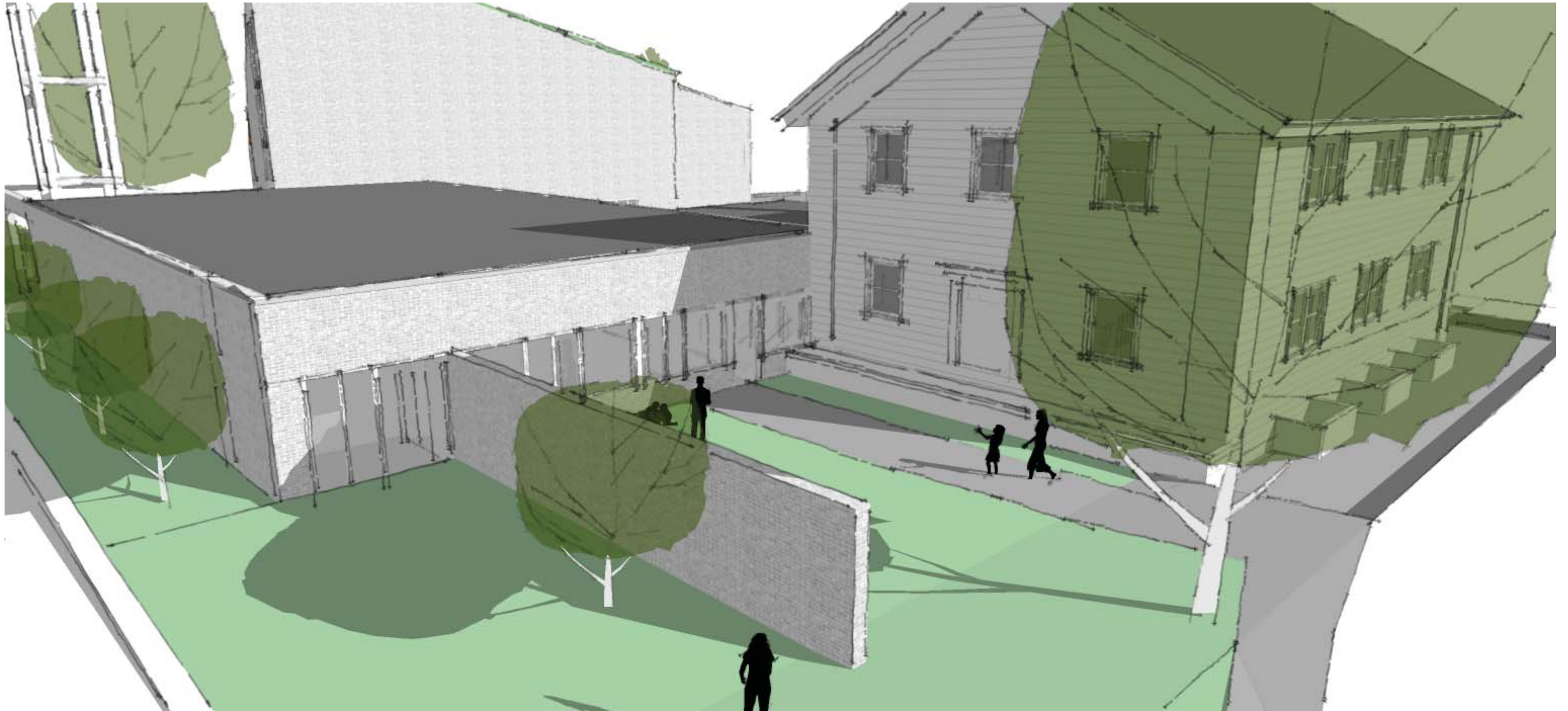
96 SF of accessible toilets



- NEW CONSTRUCTION
- RENOVATION
- NO WORK
- FLEXIBLE SPACE

Possible Second Floor Improvements

Meetinghouse Campaign Update



Conceptual Rendering, West Entry Area (EXISTING)



Conceptual Rendering, West Entry Area (POSSIBLE IMPROVEMENTS)

How Can You Help?



Questions